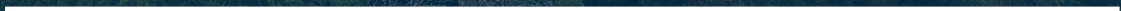


PROTECTING

WEST BALLENAS ISLAND

THE LAST PRIVATE ISLAND IN ONE OF THE SALISH
SEA'S MOST FRAGILE AND UNIQUE ARCHIPELAGOS



WEST BALLENAS ISLAND

also known as North Ballenas Island

West Ballenas Island is a sparkling jewel in the Salish Sea.

For many decades, I've boated and kayaked around this island and its neighbouring islands in the Winchelsea Archipelago. Its stunning beauty and endangered plant and animal communities make it a perfect candidate for protection.

Protecting this island may also be the catalyst for creating a new marine park including the nearby 18 islands that have some of BC's rarest and most threatened biodiversity, while offering easy access for low-impact public use by boaters and kayakers.

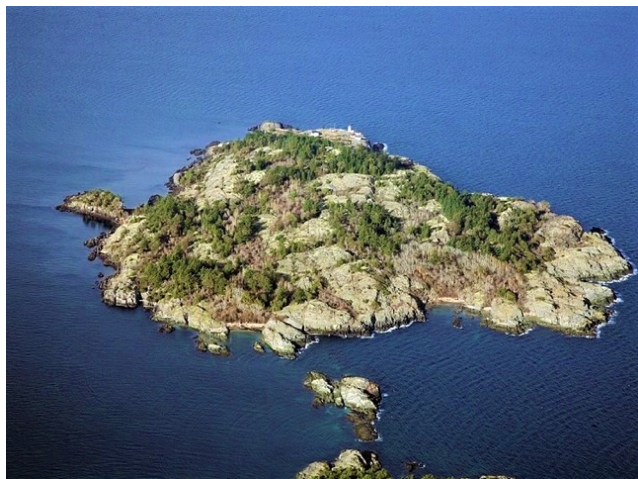
In 2019 we acquired a critical property in Princess Louisa Inlet for future generations to enjoy. You have a similar opportunity now to help add this magnificent West Ballenas Island jewel to BC's protected places.

Please join me in completing the purchase of this magnificent island property and making it a treasured part of BC's provincial parks system, forever.

Sincerely,



Ross Beaty
Chair
BC Parks Foundation

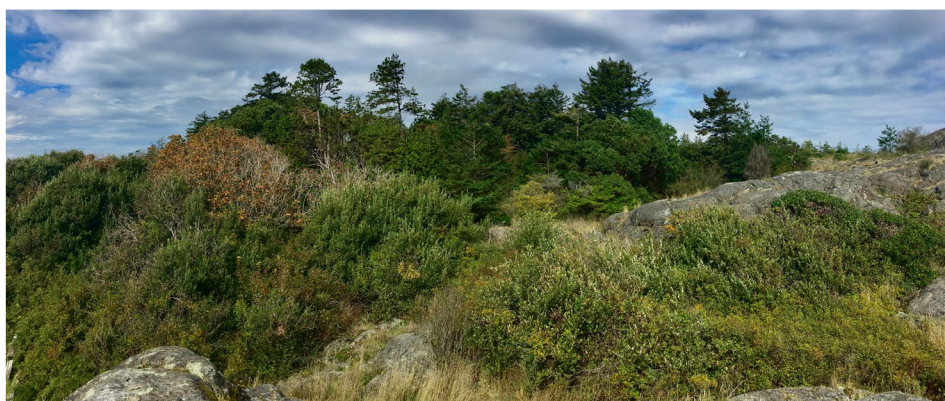


WEST BALLENAS ISLAND



West Ballenas Island is an undeveloped 100-acre island gem floating in the Salish Sea – one of BC's most threatened environments. Listed as one of the top ten most biodiverse sites in the Gulf Islands, West Ballenas is home to abundant bird populations, rare plants, threatened species, and marine life.

It's also in a prime location for human use, being close to the rapidly growing Nanaimo-Parksville region of Vancouver Island. Popular with local and international boaters visiting the surrounding archipelago, most people are not aware the island is privately held and zoned for development into several individual parcels.



In 2019 proud British Columbians and friends around the world helped us raise \$3million in 3 months to protect Princess Louisa Inlet, people like you came together to do something great. That inspired the idea that every year park angels would all work together to protect at least one special place, keeping BC beautiful.



YOUR GIFT WILL HAVE TWICE THE IMPACT

On top of the reduced price, we are thrilled to announce that a very generous anonymous donor has pledged to **match whatever you contribute** to protecting this wonderful and fragile island!

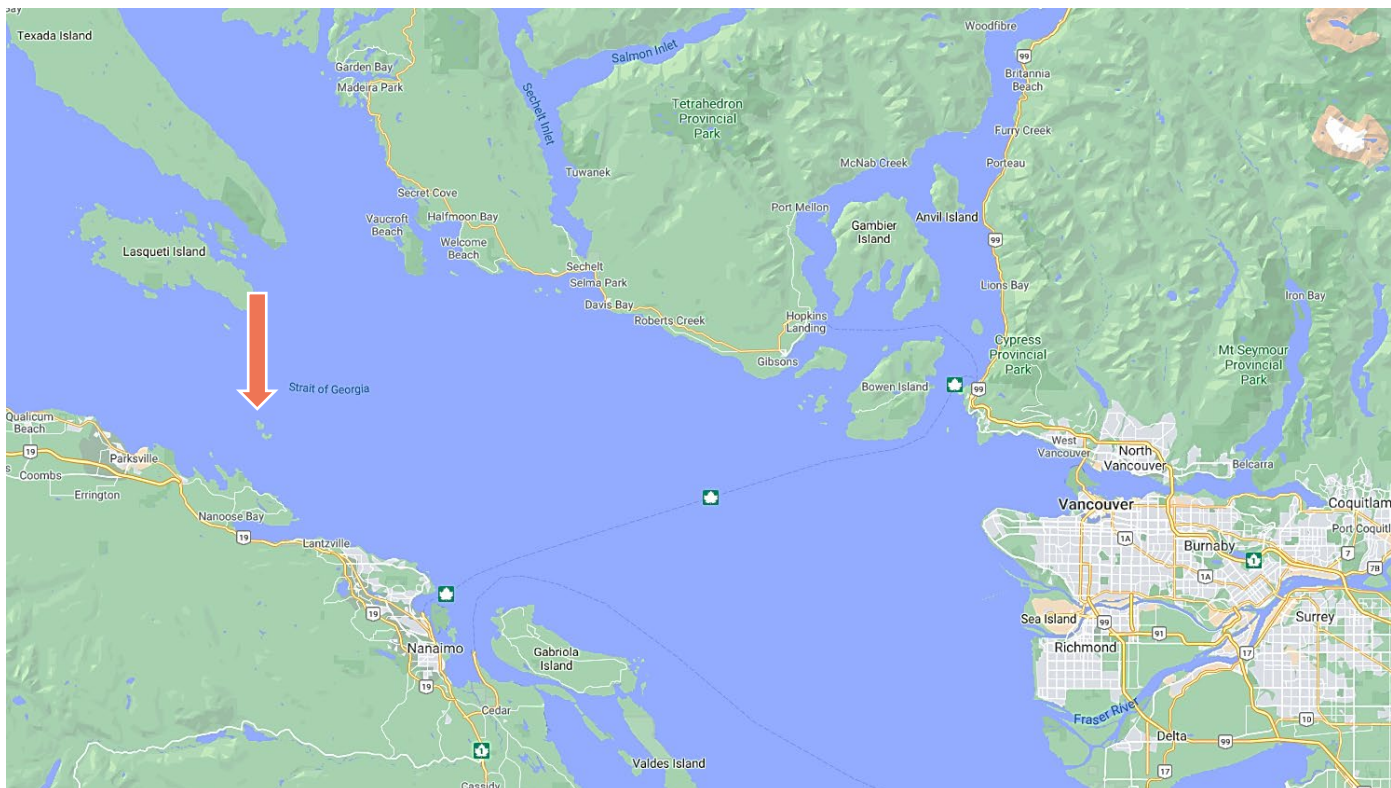
That means **only \$850,000** is needed to permanently protect one of the Gulf Island's most important places!

x 2

Your gift – no matter what size- will make a big difference. As happened with Princess Louisa Inlet, this is about the **power of many people**, from all walks of life, doing something great together.

You have done it before, and **you can do it again!** Join other park angels in doubling your gift to protect West Ballenas Island.

WHERE IS WEST BALLENAS ISLAND?



WHY IS WEST BALLENAS ISLAND SPECIAL?

- Recognized by the Conservation Data Centre as one of the ten most biodiverse sites in the Gulf Islands with coastal bluff and coastal woodland sensitive ecosystems
- Home to red-listed Garry Oak-Arbutus community and a rare Shore Pine- Cladina-Kinnikinnick plant community as well as blue-listed species
- Contains the endangered species Water-plantain buttercup, one of only two locations in British Columbia
- As an island, the property is virtually undisturbed by grazing and other human impacts
- Foreshore serves as winter haul out for California and Northern Sea Lions
- Adjacent to Federal Fisheries and Oceans' Rockfish Conservation Area
- Surrounding waters support rafts of diving sea birds, orcas and other marine mammals; the passage between the two Ballenas islands contains eelgrass beds



Pacific Northwest Rockfish

Water-plantain Buttercup



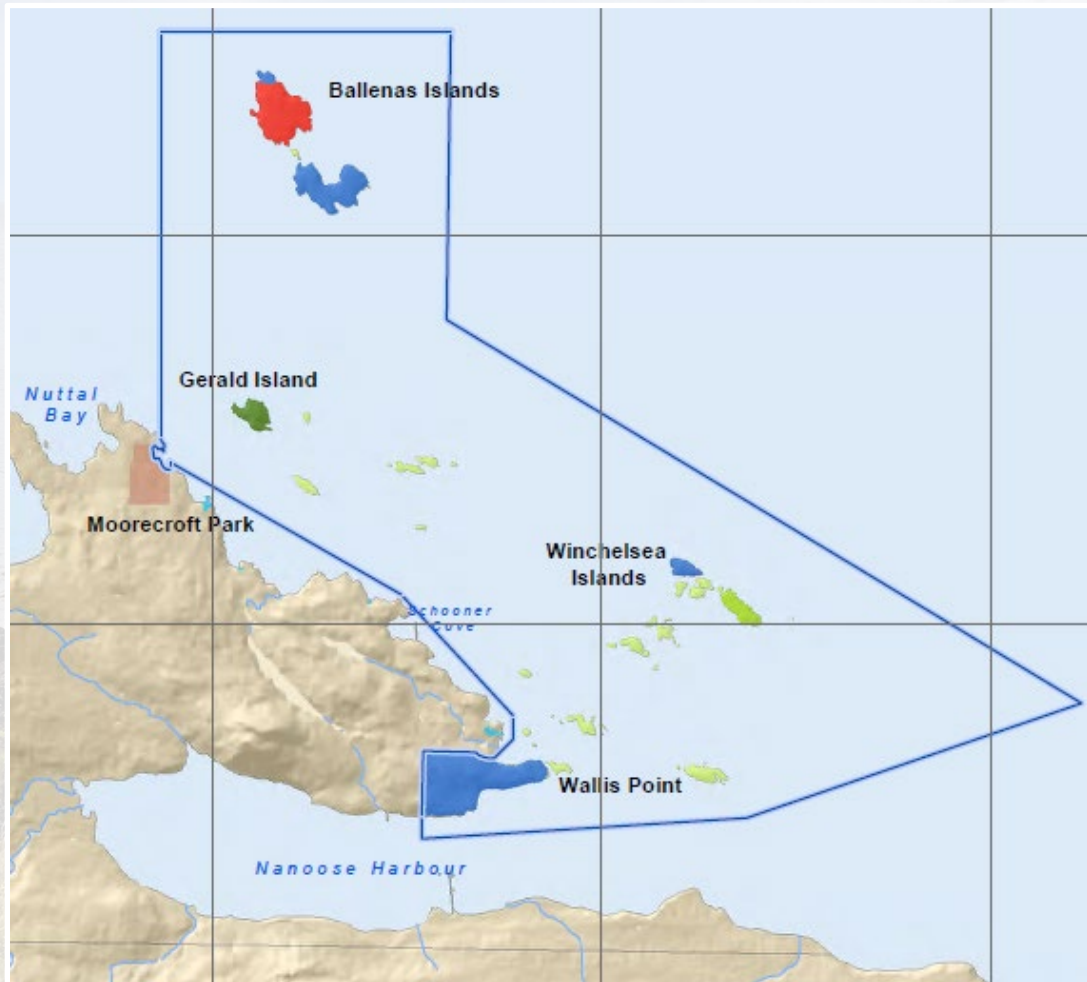
Northern Sea Lion



A CATALYST FOR THE WINCHELSEA ARCHIPELAGO

West Ballenas Island is the only private non-park parcel remaining in a proposal to establish the Ballenas-Winchelsea Archipelago as a 4900-hectare marine park– a long-standing conservation initiative within the Mount Arrowsmith Biosphere Reserve.

The area has a provincial park (Gerald Island), a private park (South Winchelsea Island), a regional park on Vancouver Island, and four small community parks along the Vancouver Island waterfront associated with the Lantzville community.



With support from the Islands Trust, the Nanaimo Regional District, the community of Lantzville, and a number of non-government groups such as BC Nature, Vancouver Island University, the Council of British Columbia Yacht Clubs, Fairwinds Community Association, and the BC Marine Trails Network, the acquisition of West Ballenas Island could act as a catalyst for garnering support from the Snaw-Naw-As (Nanoose) First Nation, BC, and Canada for creating a world-class marine protected area in one of BC's most threatened ecosystems.



bcparksfoundation.ca/west-ballenais-island



gifts@bcparksfoundation.ca



[@bcparksfdn](https://www.instagram.com/bcparksfdn)



[@bcparksfoundation](https://www.facebook.com/bcparksfoundation)



778-980-1857

THANK YOU

